

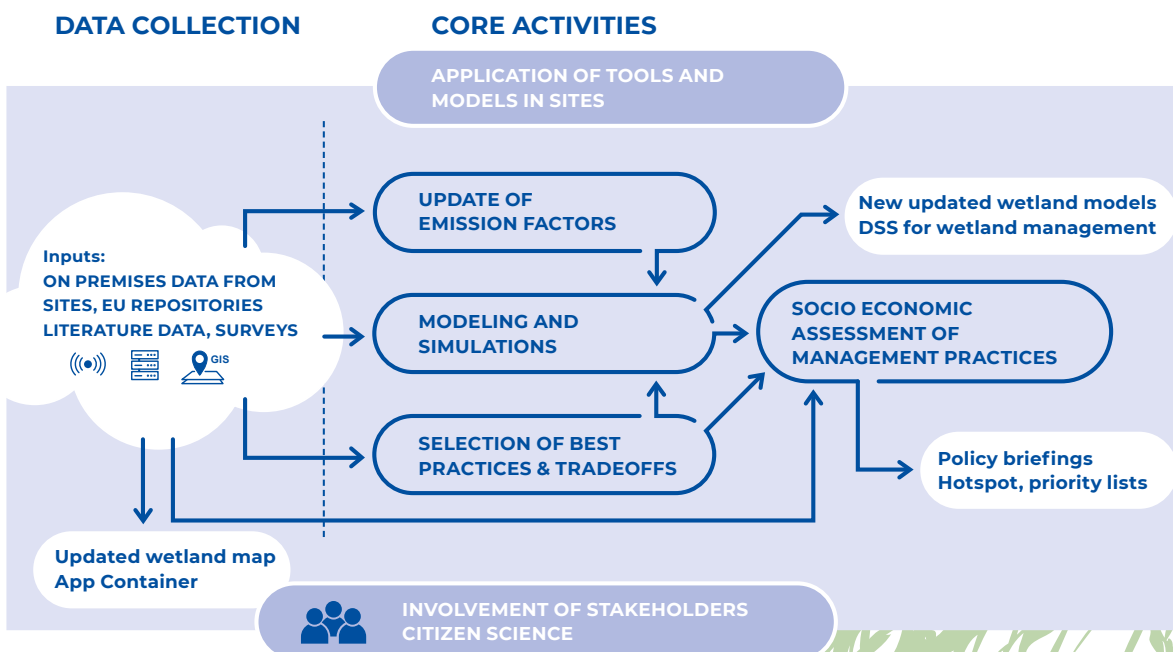
## WET HORIZONS project

WET HORIZONS is a Horizon Europe project that will provide the critical flying start for the challenge of **enhancing wetland restoration** using a holistic approach. It will **boost crucial wetland knowledge** and develop sound tools and approaches for **fast-tracking large scale restoration action**.

Despite the efforts of previous projects addressing wetlands restoration, there are still relevant gaps in knowledge due to a lack of **wetland data availability and harmonization of the existing information**. The project will improve the current data from pristine, drained and rewetted peatlands, floodplains and coastal wetlands; model the effects of typical restoration measures under variable conditions; and analyse the potential socioeconomic impacts. This will enable us to choose the best pathways in wetland restoration **minimizing trade-offs**, including **hotspot priority lists** where the ecological and biodiversity benefits are greatest with minimum investment.

WET HORIZONS will **involve citizen science** for data collection and will **develop digital tools** for upscaling wetland restoration including an **app** for the visualization of wetland status and a **Decision Support System (DSS)** for policymakers. The results will be available in open-access repositories to maximize their use and outreach.

The project is coordinated by **Aarhus University** and participant organisations for this part of the project are the **University of Greifswald, the James Hutton Institute, Radboud University, Nijmegen, University of Versailles Saint-Quentin-en-Yvelines and Warsaw University of Life Sciences**. The following organisations will also participate in the project: **Netherlands Environmental Assessment Agency, Potsdam Institute for Climate Impact Research, German Research Centre for Geosciences, Scotland Rural College, Finnish Meteorological Institute, Global Peatlands Initiative and European Science Communication Institute**.



## How can you contribute to the project?

Your participation is framed in the context of **data collection** for enhanced **spatial and temporal mapping**, through the inventory, compilation and harmonization of existing different scale wetland data sets for Europe. The goal is to improve the knowledge base on the type, extent, location, condition and type of current management practices on **peatlands, floodplains** and **coastal wetlands** in Europe. This will lead to the establishment of an **interactive European peatlands database, wetlands databases for exemplar catchments** and **European wetland map** (GIS-dataset).

For this purpose, the needs and data constraints to generate the geospatial outputs consider a constant **dialogue with policymakers, nature conservation agencies** and **regulators** before, during and after the project.

The **End users** are encouraged to participate in a survey, interviews and workshops to assess their needs and data constraints. This will enhance the usability of the products, the alignment of data sets, product functionalities, applications and ownership. This input will inform relevant criteria to feed the decision-making process for wetlands restoration.

### Timeline of activities

**Survey:** December 2022

**Interviews:** January 2023

**Workshop:** February 2023

**Workshop:** June 2023

**Workshop:** September 2024

**Workshop:** September 2025

The sessions will be coordinated **by Wetlands International – Global Office.**

### Partners

Aarhus University ([AGRO](#) and [BIO](#) departments)

[Radboud University](#)

[PBL Netherlands Environmental Assessment Agency](#)

[PIK Potsdam Institute for Climate Impact Research](#)

[University of Greifswald](#)

[GZF German Research Centre for Geosciences](#)

[The James Hutton Institute](#)

[SRUC Scotland Rural College](#)

[SGGW Warsaw University of Life Sciences](#)

[Finnish Meteorological Institute](#)

[Wetlands International](#). Affiliated entity [Wetlands International European Association](#).

[LSCE Laboratory for Sciences of Climate and Environment](#). Represented by the [Universite](#)

[de Versailles Saint-Quentin-en-Yvelines](#). Affiliated entity the [Universite Paris-Saclay](#)

[Global Peatlands Initiative](#) (United Nations Environment Programme)

[European Science Communication Institute](#) (ESCI)

